

## FactoryTalk® ViewPoint

Anytime, Anywhere Access to Your Plant Floor Operations

The purpose of enterprise-wide connectivity is to make the best use of machine and process data by transforming it into actionable, universally accessible, real-time information. To get the greatest possible ROI from your visualization solution, you need a system that extends beyond the walls of your facility to provide this kind of access on demand. With the latest advancements in mobile technology, expanding your architecture and lowering your total cost of ownership has never been easier.

FactoryTalk® ViewPoint is a mobile-ready extension of FactoryTalk View that provides a secure interface with your HMI applications through a web browser on your favorite mobile device.

Key stakeholders can now easily access, monitor, and interact with plant floor operations on demand, improving the productivity of users at every level of your organization:

- **Operators** can trend/write back from a mobile device when they step away from machine.
- **Engineering and Maintenance** can see and react to system alarming and production data remotely.
- **Production IT** can secure infrastructure and products to support your company's mobility strategy also reinforce a "bring your own device" (BYOD) strategy with multi-platform support.
- **Management and Supervisors** can see line performance and production data from anywhere, anytime.

### Did you know?

A recent report from Gartner cited that a collection on manufacturing CIOs who responded to a survey listed mobility as 2nd highest technology priority for their companies over the 2012 to 2015 period. They realize that the #1 benefit for having access to information on a mobile device is increased productivity.



LISTEN.  
THINK.  
SOLVE.®

## Web-Enabled Visualization

As an extension to FactoryTalk® View SE and PanelView™ Plus, FactoryTalk ViewPoint leverages user familiarity with the features of today's most popular browsers and mobile devices, providing an intuitive and familiar user experience in a maintenance-free client. With no additional development required, FactoryTalk ViewPoint provides a truly interactive web-based HMI from multiple browsers or your favorite mobile device.

- Support for Windows and mobile devices running iOS or Android.
- No browser software to install or configure.
- Full support for graphics and configured animations.
- Configurable security to provide users read/write access.



Real-time and historical trending from FactoryTalk View SE

Displays are now rendered in HTML5 to support a full range of mobile devices

Support for 25 client connections



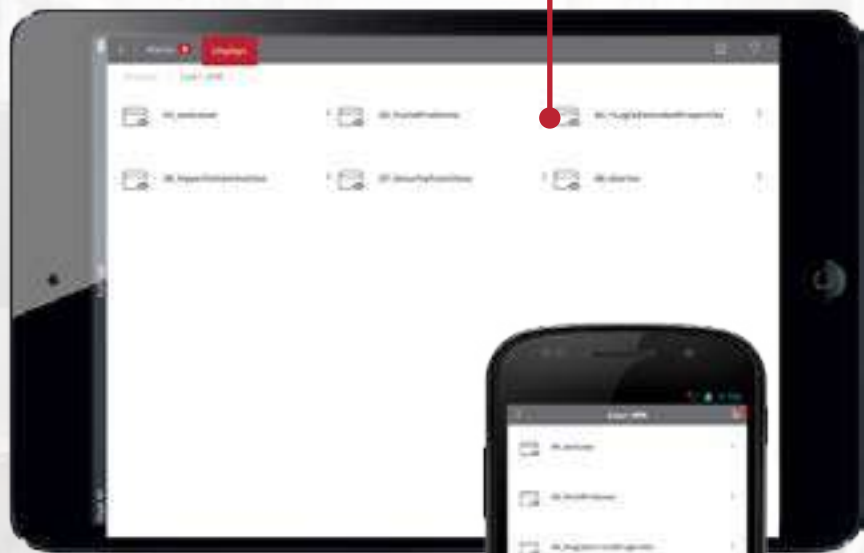
Alarm Viewing from FactoryTalk View SE



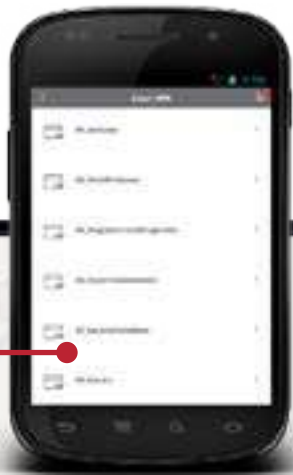
## FactoryTalk ViewPoint Mobile

FactoryTalk Viewpoint Mobile is a responsive mobile interface that provides built-in screen navigation and automatically optimizes graphic displays for the user's device. With no client software to install and support for Windows, iOS, and Android, FactoryTalk ViewPoint Mobile enables you to define a different HMI experience at home, on the road, or in the office.

List of all published displays, organized by area definitions of your application



Built-in, intuitive screen navigation strategy



Displays are now rendered in HTML5 to provide support for full range of mobile devices



Dynamically resizes to keep original aspect ratio of display



## Making Your HMI Mobile

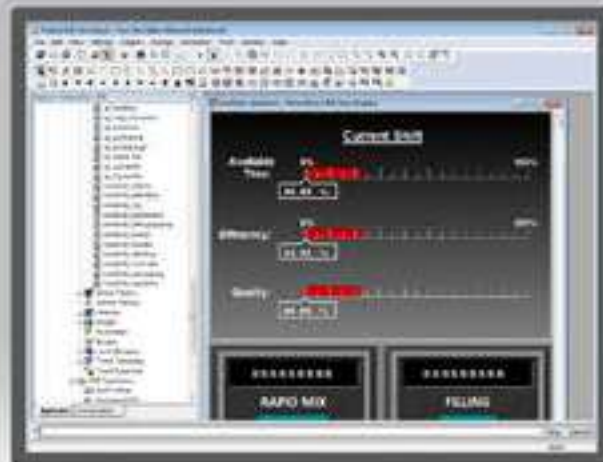
Making your FactoryTalk View project accessible from a web browser or your favorite mobile device is quick and easy. Here's how in 3 easy steps:

### FactoryTalk® ViewPoint Content Creation Steps

STEP  
**1**

#### CREATE

Using FactoryTalk® View Studio



STEP  
**2**

#### PUBLISH

Using FactoryTalk® ViewPoint Publishing Wizard



STEP  
**3**

#### VIEW

Using your web browser





## PanelView™ Plus with Embedded FactoryTalk® ViewPoint

FactoryTalk ViewPoint opens the possibility of using any mobile device to display PanelView™ Plus screens, providing the user with access to machine data from a remote location without installing or configuring any additional software.

Included with  
PanelView™ Plus firmware



No license or FactoryTalk  
Activation required



Compatible with PanelView™  
Plus 6, 7 Standard and  
Performance form factors



Supports a single client  
connection

**Visit us at : <https://www.adtech.co.th>**

**Contact us at :**

**ADVANCED TECHNOLOGIES CO., LTD.**

79/11 Soi Bangkrang 42 , Bangkruai-Sainoi Road,

Bangkrang, Muang, Nonthaburi 11000, Thailand

Tel : + 66 2 926 2311 - 12 / Fax : + 66 2 903 5481

Email : [sales@adtech.co.th](mailto:sales@adtech.co.th) Opening Hours : 8:30 AM - 5:30 PM (Monday - Friday)

ADVANCED TECHNOLOGIES CO., LTD.

---

was established since 2012 for the mission of World Class product Sale,  
Engineering, Training and especially Electrical and Automation solution provider.